

10_{B&C} *Beckett Way*

parkwest.ie

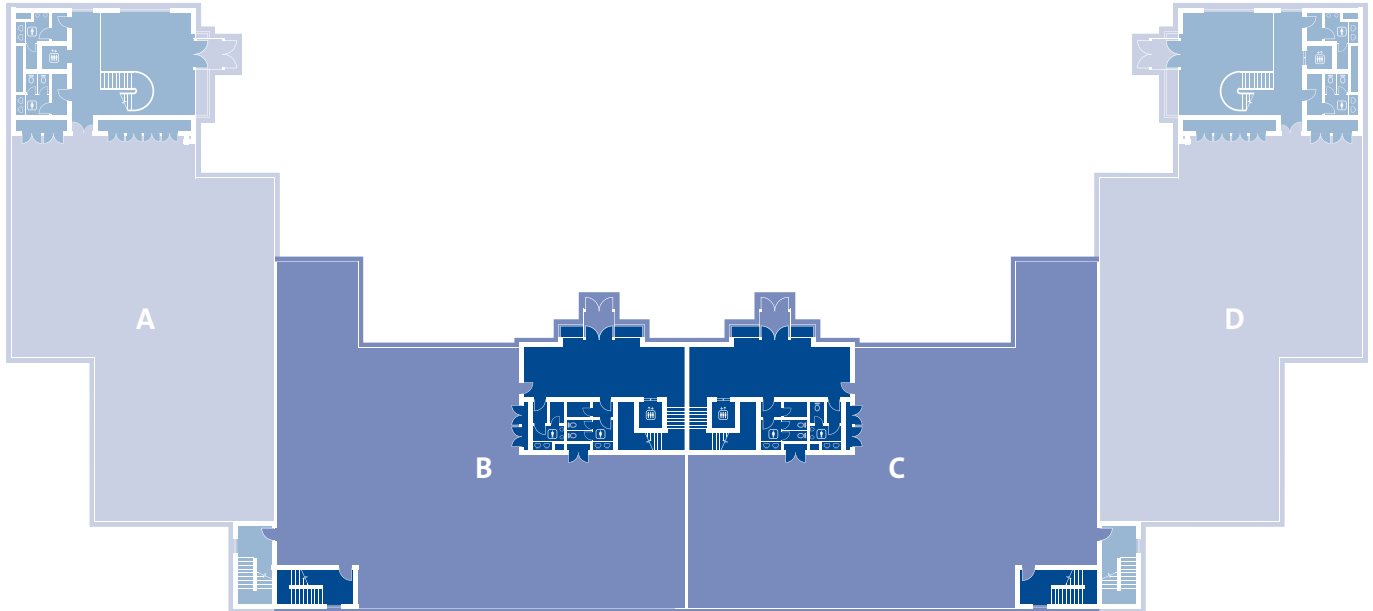
19,117ft² (1,776m²)
Floors from 6,372ft² (592m²)


Business Park



BER C1

10_{B&C} Beckett Way



Accommodation

From 6,372ft² (592m²) to 19,117ft² (1,776m²)

Specification

Raised access floors (*floor voids 100mm*)
Suspended ceilings (*ceiling voids 350mm clear*)
Usable floor-to-ceiling height 2.7m (9ft)
Entrance foyer floor-to-ceiling height 6.325m (21ft)
Category 2 lighting
VRV air-conditioning
Multi-duct telecoms
8-person passenger lifts
Ample car parking

BER Details for 10B

BER C1
BER No.800016602
Energy Performance Indicator: 345.78 kWh/m²/yr

BER Details for 10C

BER C1
BER No.800027021
Energy Performance Indicator: 335.63 kWh/m²/yr

Transport

Located by M50/N7 only 20 minutes to Dublin Airport and 20 minutes to City Centre and Grand Canal Dock by on-site train.
Additional connections with Luas Red Line and Dublin Bus.

Gross internal floor area per block

Block 10B&C	m ²	ft ²
G Floor	592	6,372
1st Floor	592	6,372
2nd Floor	592	6,372
Total	1,776	19,116



Agents

CBRE

**Mark Smyth
& Alex Fahey**
T: +353 1 618 5500
PSRA 001528

**Knight
Frank**

David Reddy
T: +353 1 634 2466
PSRA 001880

**CUSHMAN &
WAKEFIELD**
COMMERCIAL PARTNER OF SHERRY FITZGERALD

David Bennett
T: +353 1 639 9374
PSRA 002222

Developer

**HARCOURT
DEVELOPMENTS**

harcourtdevelopments.com
T: 01 475 3928

**park
west**
Business Park

parkwest.ie
T: 01 475 3928

Disclaimer: CBRE, Knight Frank and Cushman & Wakefield for themselves and for the vendors or lessors of this property whose agents they are give notice that: (i) The particulars are set out as a general outline for the guidance of intending purchasers or lessees, and do not constitute part of, an offer or contract; (ii) All description, dimensions, references to condition and necessary permission for use and occupation and other details are given in good faith and are believed to be correct, but any intending purchasers or tenants should not rely on them as statements or representations of fact but must satisfy themselves by inspection or otherwise as to the correctness of each of them; (iii) No person in the employment of CBRE, Knight Frank and Cushman & Wakefield has any authority to make or give any representation or warranty whatsoever in relation to the property.