

10A *Beckett Way*

parkwest.ie

Fully-Fitted Office Space

11,668ft² (1084m²)

Floors from 5,834ft² (542m²)

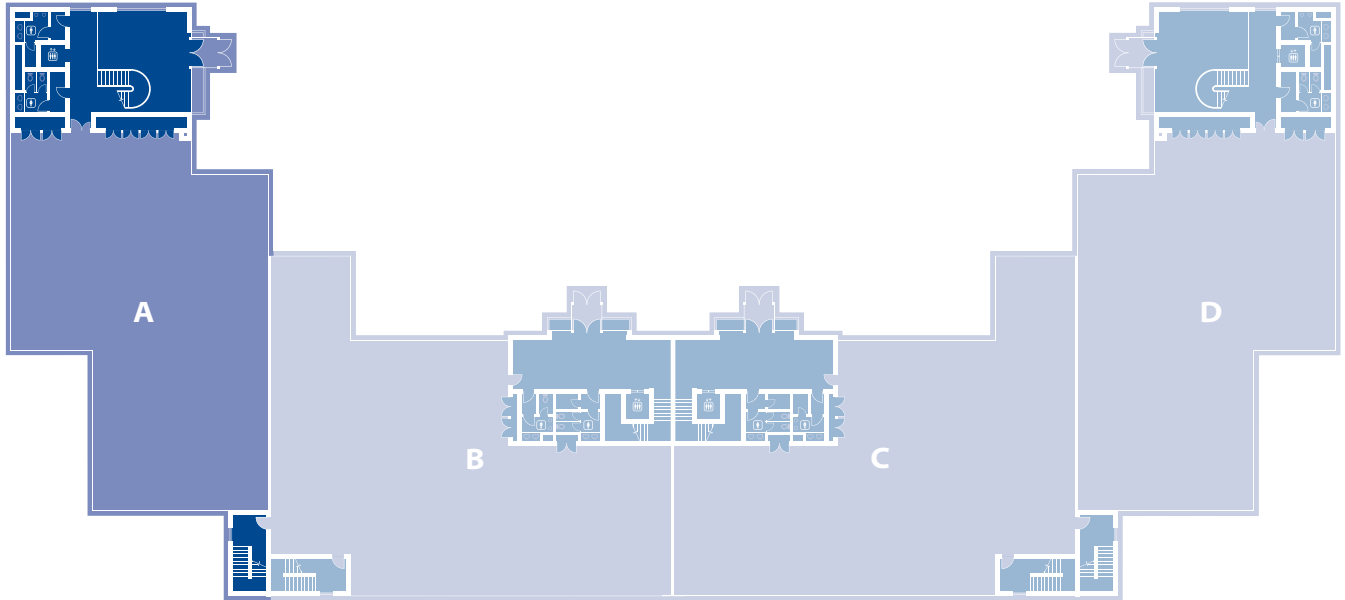
 park
west
Business Park



▶ ONLY 20 MINUTES TO DUBLIN AIRPORT AND 20 MINUTES TO CITY CENTRE AND GRAND CANAL DOCK BY ON-SITE TRAIN.



10A *Beckett Way*



Accommodation

From 5,834ft² (542m²) to 11,668ft² (1,084m²)

Specification

- Fully-fitted turn key office space
- Raised access floors (floor voids 100mm)
- Suspended ceilings (ceiling voids 350mm clear)
- Usable floor-to-ceiling height 2.7m (9ft)
- Entrance foyer floor-to-ceiling height 6.325m (21ft)
- Category 2 lighting
- VRV air-conditioning
- Multi-duct telecoms
- 8-person passenger lifts
- Ample car parking

BER Details

- BER C1
- BER No.800061244
- Energy Performance Indicator: 387.71 kWh/m²/yr

Gross Internal floor area

Block 10A		m ²	ft ²
G Floor	Fulfil Nutrition	542	5,834
1st Floor	Available	542	5,834
2nd Floor	Available	542	5,834
Total		1,084	11,668



Transport

Located by M50/N7 only 20 minutes to Dublin Airport and 20 minutes to City Centre and Grand Canal Dock by on-site train. Additional connections with Luas Red Line and Dublin Bus.

Agents



Sam Daunt
T: +353 1 618 5500
PSRA 001528



Karl Byrne
T: +353 1 639 9374
PSRA 002222

Developer



harcourtdevelopments.com
T: 01 475 3928



parkwest.ie
T: 01 475 3928