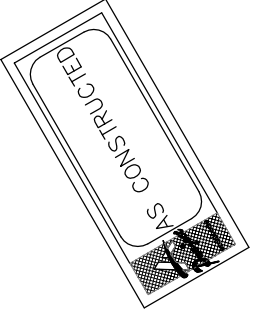


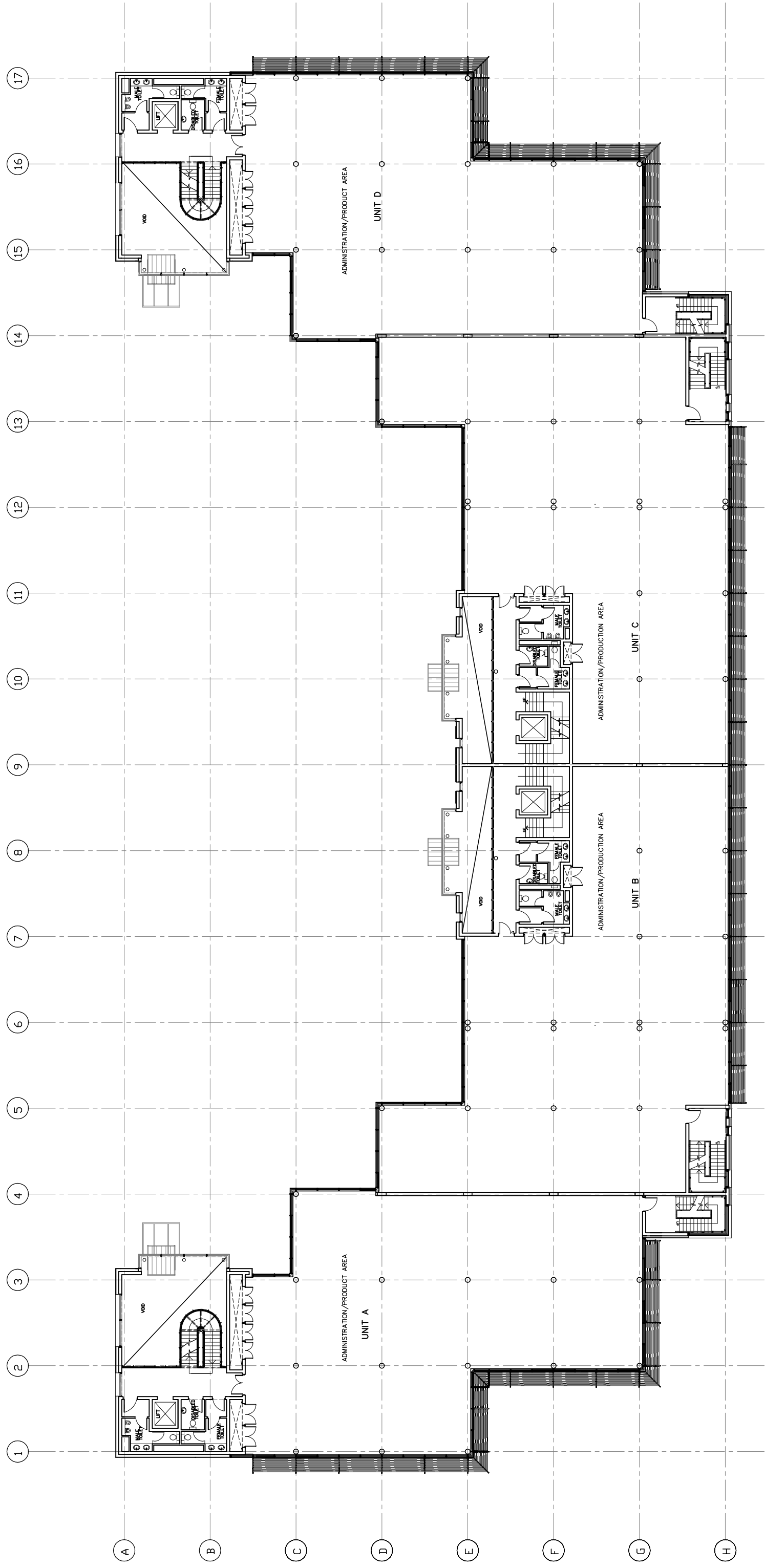
GROUND FLOOR PLAN

KEY: GENERAL CONSTRUCTION NOTES

1. **ROOF**
ROOFING MEMBRANE ROOFING SYSTEM ON INSULATION TO FALLS WITH LPVC
OUTLETS AND DOWNSPEL.
2. **WALLS**
APPROVED SUSPENDED CLAY TILE FACADE SYSTEM AND LOUVERES ON STEEL
CONCRETE SUPPORT STRUCTURE TO CLADDING CONTRACTORS DESIGN.
3. **STRUCTURE**
STEEL FRAMEWORK WITH 250mm x 250mm x 10mm I BEAMS AND 200mm x 200mm x 10mm
COLUMNS. ALL CONCRETE FLOORS TO BE CAST IN PLACE WITH 150mm
TO FLOOR LEVELS. ALL TO DIMENSIONS SET OUT AND SPECIFICATION.
4. **ROOF**
TRUSS ROOFING SYSTEM ON INSULATION TO FALLS WITH LPVC
OUTLETS AND DOWNSPEL.
5. **PARAMET**
STEEL PARAMET FRAME, CAPPING AND INSULATION BY CLADDING CONTRACTOR.
6. **CLADDING**
APPROVED SUSPENDED CLAY TILE FACADE SYSTEM AND INSULATION WITH
TRUSS ROOFING SYSTEM ON INSULATION TO FALLS WITH LPVC OUTLETS AND
DOWNSPEL. TO CLADDING CONTRACTORS DESIGN.
7. **GLAZING**
PRESSURE CAPTED DOUBLE GLAZED ALUMINIUM CURTAIN WALL SYSTEM,
ELEVATION, COLOUR AND DETAILS TO ARCHITECTS APPROVAL.
8. **GLAZING**
STRUCTURAL GLAZING TO ENTRY AREAS SUPPORTED ON 250mm STEEL COLUMNS
ELEVATION, COLOUR AND DETAILS TO ARCHITECTS APPROVAL.
9. **SHARED GLASS**
SHARED GLASS GLAZING PANELS.
10. **BRICK SLEER**
TRUSS ROOFING SYSTEM WITH ALUMINIUM BRICK SLEER
ELEVATION AND DESIGN TO ARCHITECTS APPROVAL.
11. **SHARED GLASS / FIRE BREAK**
SHARED GLASS WITH FIRE RETARDANT BACKING
ELEVATION AND DESIGN TO ARCHITECTS APPROVAL.



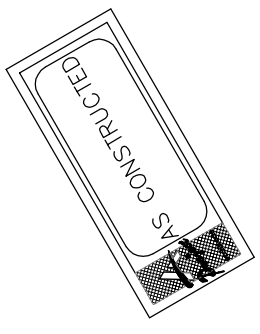
0	ISSUED AS CONSTRUCTED	25/09/00
Rev.	Description	Date
This drawing is the property of the client and shall not be used for any other project without the written permission of the client. All dimensions are to be taken from this drawing.		
Project: PARK WEST INDUSTRIAL		
Title: BLOCKS 9 & 10 GROUND FLOOR PLAN		
Drawing No. G002(B09)-WD-100		
Prepared by	Date	25/06/99
Checked by	Scale	1:100
Drawn by	Issue	0
Checked by	Checked by	0
© PARK WEST (DUBLIN) L.T.D.		



FIRST FLOOR PLAN

KEY: GENERAL CONSTRUCTION NOTES

1. **ROOF**
ROOF PANELS TO BE APPROVED BY ARCHITECTS AND INSULATION WITH APPROVED APPROVED DETAIL TO CLADDING CONTRACTORS DESIGN TO ARCHITECTS APPROVAL.
 2. **WALLS**
APPROVED SUSPENDED CLAY TILE FACADE SYSTEM AND LOUVERES ON STEEL STRUCTURE TO BE APPROVED BY ARCHITECTS APPROVAL.
 3. **STRUCTURE**
CONCRETE FLOOR SLABS TO BE APPROVED BY ARCHITECTS APPROVAL. ALL CONCRETE WORK TO BE APPROVED BY ARCHITECTS APPROVAL. ALL CONCRETE WORK TO BE APPROVED BY ARCHITECTS APPROVAL.
 4. **ROOF**
TRICAL MEMBRANE ROOFING SYSTEM ON INSULATION TO FALLS WITH LPVC DOWLS AND DOWNSPEL.
 5. **PARAMET**
STEEL PARAMET FRAME, CAPPING AND INSULATION BY CLADDING CONTRACTOR.
6. **CLADDING**
APPROVED APPROVED DETAIL TO CLADDING CONTRACTORS DESIGN TO ARCHITECTS APPROVAL.
 7. **GLAZING**
PRESSURE CAPPED DOUBLE GLAZED ALUMINIUM CURTAIN WALL SYSTEM, ELEVATION, COLOUR AND DETAIL TO ARCHITECTS APPROVAL.
 8. **GLAZING**
STRUCTURAL GLAZING TO ENTRY AREAS SUPPORTED ON 21M STEEL COLUMNS TO BE APPROVED BY ARCHITECTS APPROVAL.
 9. **GLAZED GLASS**
GLAZED GLASS GLAZING PANELS.
 10. **BRICK SKELE**
BRICK SKELE TO BE APPROVED BY ARCHITECTS APPROVAL. COLOUR AND DESIGN TO ARCHITECTS APPROVAL.
 11. **GLAZED GLASS / FIRE BREAK**
GLAZED GLASS / FIRE BREAK WITH FIRE RETARDANT BACKING TO BE APPROVED BY ARCHITECTS APPROVAL.



0	ISSUED AS CONSTRUCTED	25/09/00
Rev.	Description	Date
This drawing is the property of project architect and shall not be used for any other project without the written permission of project architect and shall be returned on request.		
Project: PARK WEST INDUSTRIAL DEVELOPMENT		
Title: BLOCKS 9 & 10 FIRST FLOOR PLAN		
Drawing No. G002(B09)-WD-101		
Project Architect	Date	28-6-99
Project Engineer	Scale	1:100
Project Designer	Drawn by	O.F.
Project Checker	Checked by	0
© PARK WEST (DUBLIN) L.T.D.		

no dimensions are to be scaled from this drawing

copyright reserved © 1998

- KEY: GENERAL CONSTRUCTION NOTES**
- FOUNDATION**
1. INSPAN 45 1000 IP ROOF PANELS OR SIMILAR APPROVED ON STEEL PURMS AND PORTAL FRAMES TO CLADDING CONTRACTORS DESIG.
 - WALLS**
2. WALLS TO BE CONSTRUCTED IN CLAY TILE FACIAS SYSTEM AND CHIMNEYS ON STEEL PORTAL FRAMES AND SECONDARY SUPPORT STRUCTURE TO CLADDING CONTRACTORS DESIG.
 - STRUCTURE**
3. PRECAST CONCRETE BEAMS AND FLOORS TO ROOF SECOND AND FIRST LEVEL. DIMENSIONS TO BE AS SHOWN. CONCRETE BEAMS AND PRECAST PANELS/FRAMING COMBINED TO USE AREA. ALL TO ENGINEERS DETAIL AND SPECIFICATION.
 - ROOF**
4. ROOF INSULATION SYSTEM ON INSULATION TO FALLS WITH UPFC OUTLETS AND DOWNPIPE.
 - PANNET**
5. STEEL PANNET FRAME, CAPPING AND INSULATION BY CLADDING CONTRACTOR.
 - CLADDING**
6. APPROVED SUSPENDED CLAY TILE FACIAS SYSTEM AND INSULATION WITH ALL INSTALLATION TO MANUFACTURERS SPECIFICATIONS, DETAILS AND COLOUR TO ARCHITECTS APPROVAL.
 - GLAZING**
7. PRESSURE CAPTED DOUBLE GLAZED ALUMINUM CURTAIN WALL SYSTEM AND GLAZING TO BE AS SHOWN. ALL TO BE SETOUT INDICATED ON ARCHITECTS DRAWINGS AND DETAILS TO ARCHITECTS APPROVAL.
 - GLAZING**
8. GLAZING TO BE DOUBLE GLAZED ALUMINUM CURTAIN WALL SYSTEM AND GLAZING TO BE AS SHOWN. ALL TO BE SETOUT INDICATED ON ARCHITECTS DRAWINGS AND DETAILS TO ARCHITECTS APPROVAL.
 - GLAZING**
9. GLAZING TO BE DOUBLE GLAZED ALUMINUM CURTAIN WALL SYSTEM AND GLAZING TO BE AS SHOWN. ALL TO BE SETOUT INDICATED ON ARCHITECTS DRAWINGS AND DETAILS TO ARCHITECTS APPROVAL.
 - GLAZING**
10. GLAZING TO BE DOUBLE GLAZED ALUMINUM CURTAIN WALL SYSTEM AND GLAZING TO BE AS SHOWN. ALL TO BE SETOUT INDICATED ON ARCHITECTS DRAWINGS AND DETAILS TO ARCHITECTS APPROVAL.
 - GLAZING**
11. GLAZING TO BE DOUBLE GLAZED ALUMINUM CURTAIN WALL SYSTEM AND GLAZING TO BE AS SHOWN. ALL TO BE SETOUT INDICATED ON ARCHITECTS DRAWINGS AND DETAILS TO ARCHITECTS APPROVAL.

FINISHES
1. EXTERIOR WALLS TO BE AS SHOWN. ALL TO BE SETOUT INDICATED ON ARCHITECTS DRAWINGS AND DETAILS TO ARCHITECTS APPROVAL.

GLAZING
2. GLAZING TO BE DOUBLE GLAZED ALUMINUM CURTAIN WALL SYSTEM AND GLAZING TO BE AS SHOWN. ALL TO BE SETOUT INDICATED ON ARCHITECTS DRAWINGS AND DETAILS TO ARCHITECTS APPROVAL.

GLAZING
3. GLAZING TO BE DOUBLE GLAZED ALUMINUM CURTAIN WALL SYSTEM AND GLAZING TO BE AS SHOWN. ALL TO BE SETOUT INDICATED ON ARCHITECTS DRAWINGS AND DETAILS TO ARCHITECTS APPROVAL.

GLAZING
4. GLAZING TO BE DOUBLE GLAZED ALUMINUM CURTAIN WALL SYSTEM AND GLAZING TO BE AS SHOWN. ALL TO BE SETOUT INDICATED ON ARCHITECTS DRAWINGS AND DETAILS TO ARCHITECTS APPROVAL.

GLAZING
5. GLAZING TO BE DOUBLE GLAZED ALUMINUM CURTAIN WALL SYSTEM AND GLAZING TO BE AS SHOWN. ALL TO BE SETOUT INDICATED ON ARCHITECTS DRAWINGS AND DETAILS TO ARCHITECTS APPROVAL.

GLAZING
6. GLAZING TO BE DOUBLE GLAZED ALUMINUM CURTAIN WALL SYSTEM AND GLAZING TO BE AS SHOWN. ALL TO BE SETOUT INDICATED ON ARCHITECTS DRAWINGS AND DETAILS TO ARCHITECTS APPROVAL.

GLAZING
7. GLAZING TO BE DOUBLE GLAZED ALUMINUM CURTAIN WALL SYSTEM AND GLAZING TO BE AS SHOWN. ALL TO BE SETOUT INDICATED ON ARCHITECTS DRAWINGS AND DETAILS TO ARCHITECTS APPROVAL.

GLAZING
8. GLAZING TO BE DOUBLE GLAZED ALUMINUM CURTAIN WALL SYSTEM AND GLAZING TO BE AS SHOWN. ALL TO BE SETOUT INDICATED ON ARCHITECTS DRAWINGS AND DETAILS TO ARCHITECTS APPROVAL.

GLAZING
9. GLAZING TO BE DOUBLE GLAZED ALUMINUM CURTAIN WALL SYSTEM AND GLAZING TO BE AS SHOWN. ALL TO BE SETOUT INDICATED ON ARCHITECTS DRAWINGS AND DETAILS TO ARCHITECTS APPROVAL.

GLAZING
10. GLAZING TO BE DOUBLE GLAZED ALUMINUM CURTAIN WALL SYSTEM AND GLAZING TO BE AS SHOWN. ALL TO BE SETOUT INDICATED ON ARCHITECTS DRAWINGS AND DETAILS TO ARCHITECTS APPROVAL.

GLAZING
11. GLAZING TO BE DOUBLE GLAZED ALUMINUM CURTAIN WALL SYSTEM AND GLAZING TO BE AS SHOWN. ALL TO BE SETOUT INDICATED ON ARCHITECTS DRAWINGS AND DETAILS TO ARCHITECTS APPROVAL.

FINISHES
1. EXTERIOR WALLS TO BE AS SHOWN. ALL TO BE SETOUT INDICATED ON ARCHITECTS DRAWINGS AND DETAILS TO ARCHITECTS APPROVAL.

GLAZING
2. GLAZING TO BE DOUBLE GLAZED ALUMINUM CURTAIN WALL SYSTEM AND GLAZING TO BE AS SHOWN. ALL TO BE SETOUT INDICATED ON ARCHITECTS DRAWINGS AND DETAILS TO ARCHITECTS APPROVAL.

GLAZING
3. GLAZING TO BE DOUBLE GLAZED ALUMINUM CURTAIN WALL SYSTEM AND GLAZING TO BE AS SHOWN. ALL TO BE SETOUT INDICATED ON ARCHITECTS DRAWINGS AND DETAILS TO ARCHITECTS APPROVAL.

GLAZING
4. GLAZING TO BE DOUBLE GLAZED ALUMINUM CURTAIN WALL SYSTEM AND GLAZING TO BE AS SHOWN. ALL TO BE SETOUT INDICATED ON ARCHITECTS DRAWINGS AND DETAILS TO ARCHITECTS APPROVAL.

GLAZING
5. GLAZING TO BE DOUBLE GLAZED ALUMINUM CURTAIN WALL SYSTEM AND GLAZING TO BE AS SHOWN. ALL TO BE SETOUT INDICATED ON ARCHITECTS DRAWINGS AND DETAILS TO ARCHITECTS APPROVAL.

GLAZING
6. GLAZING TO BE DOUBLE GLAZED ALUMINUM CURTAIN WALL SYSTEM AND GLAZING TO BE AS SHOWN. ALL TO BE SETOUT INDICATED ON ARCHITECTS DRAWINGS AND DETAILS TO ARCHITECTS APPROVAL.

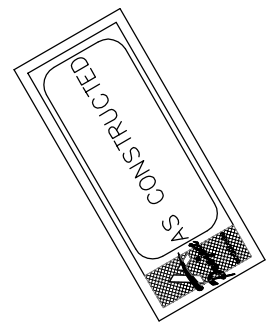
GLAZING
7. GLAZING TO BE DOUBLE GLAZED ALUMINUM CURTAIN WALL SYSTEM AND GLAZING TO BE AS SHOWN. ALL TO BE SETOUT INDICATED ON ARCHITECTS DRAWINGS AND DETAILS TO ARCHITECTS APPROVAL.

GLAZING
8. GLAZING TO BE DOUBLE GLAZED ALUMINUM CURTAIN WALL SYSTEM AND GLAZING TO BE AS SHOWN. ALL TO BE SETOUT INDICATED ON ARCHITECTS DRAWINGS AND DETAILS TO ARCHITECTS APPROVAL.

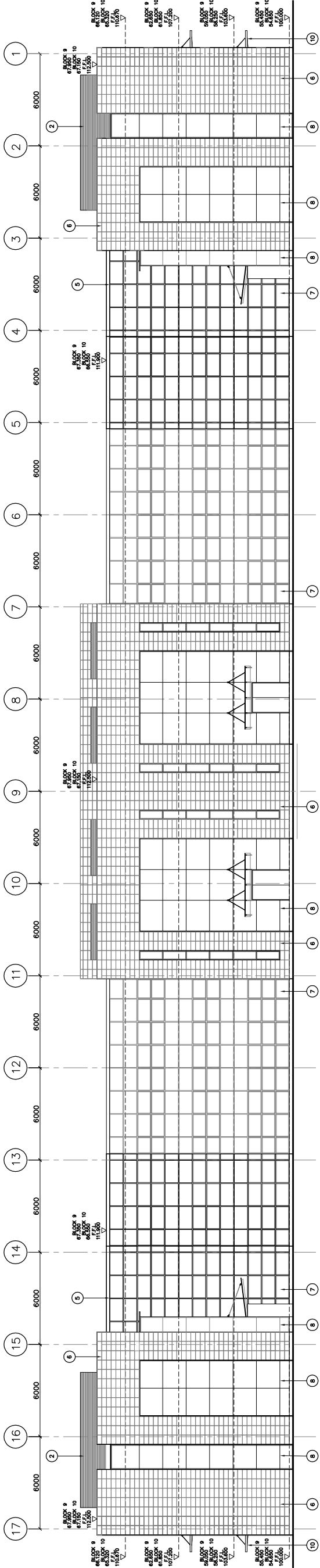
GLAZING
9. GLAZING TO BE DOUBLE GLAZED ALUMINUM CURTAIN WALL SYSTEM AND GLAZING TO BE AS SHOWN. ALL TO BE SETOUT INDICATED ON ARCHITECTS DRAWINGS AND DETAILS TO ARCHITECTS APPROVAL.

GLAZING
10. GLAZING TO BE DOUBLE GLAZED ALUMINUM CURTAIN WALL SYSTEM AND GLAZING TO BE AS SHOWN. ALL TO BE SETOUT INDICATED ON ARCHITECTS DRAWINGS AND DETAILS TO ARCHITECTS APPROVAL.

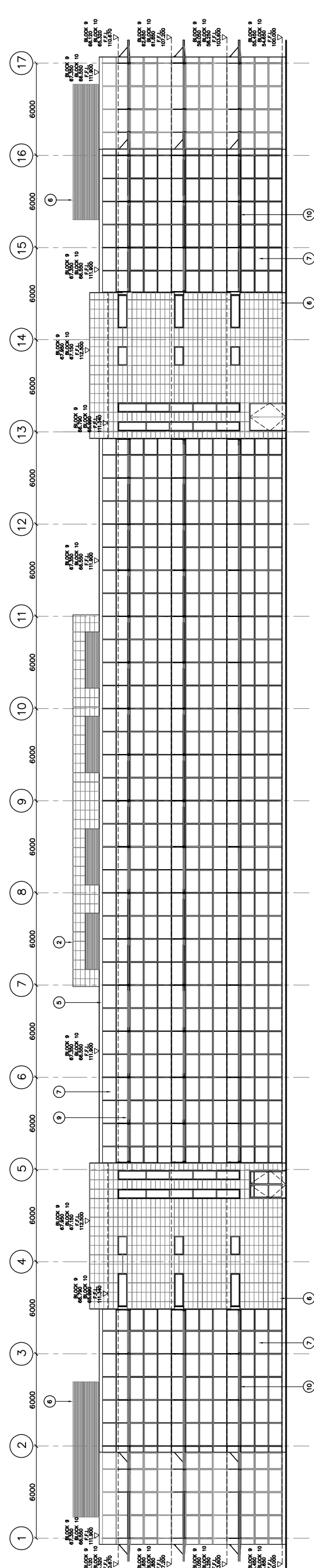
GLAZING
11. GLAZING TO BE DOUBLE GLAZED ALUMINUM CURTAIN WALL SYSTEM AND GLAZING TO BE AS SHOWN. ALL TO BE SETOUT INDICATED ON ARCHITECTS DRAWINGS AND DETAILS TO ARCHITECTS APPROVAL.



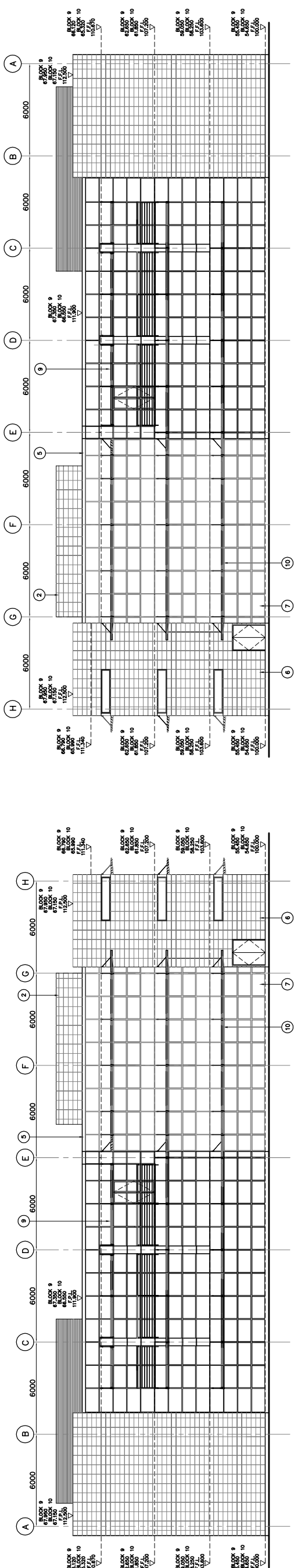
0	ISSUED AS CONSTRUCTED	25/09/00
Description: PARK WEST INDUSTRIAL PARK Drawing No: 0002(B09)-WD-130 Date: 28/06/99 Scale: 1:100 Drawn by: FD/OF Issue: 0		
Project: PARK WEST INDUSTRIAL PARK Title: BLOCKS 9 & 10 ELEVATIONS Drawing No: 0002(B09)-WD-130 Date: 28/06/99 Scale: 1:100 Drawn by: FD/OF Issue: 0		
Client: PARK WERST (DUBLIN) LTD.		



NORTH ELEVATION
BLOCK 9 AND BLOCK 10.



SOUTH ELEVATION
BLOCK 9 AND BLOCK 10.



EAST ELEVATION
BLOCK 9 AND BLOCK 10.